

EPL Helpful Hints

- 1) EPL is supported by Windows XP and 7 and browsers such as Google Chrome, IE 9, and Firefox. For the best user experience, use Google Chrome.
- 2) IR Link: <http://simplairepl.com/IR/Login/Login.aspx>
- 3) For creating a new account password, make sure you use a minimum of 7 characters and no blank spaces. Also, the password is case sensitive and should contain at least 1 non alphanumeric character. If the password does not meet these requirements, then the box will have a red border:

The screenshot shows a web browser window with the URL 217.10.132.155/dev/IR/CreateAccount/CreateAccount.aspx. The page features the Ingersoll Rand logo and the text 'SimplAir | EPL'. A modal window titled 'Create a New Account' is open, containing the following fields and elements:

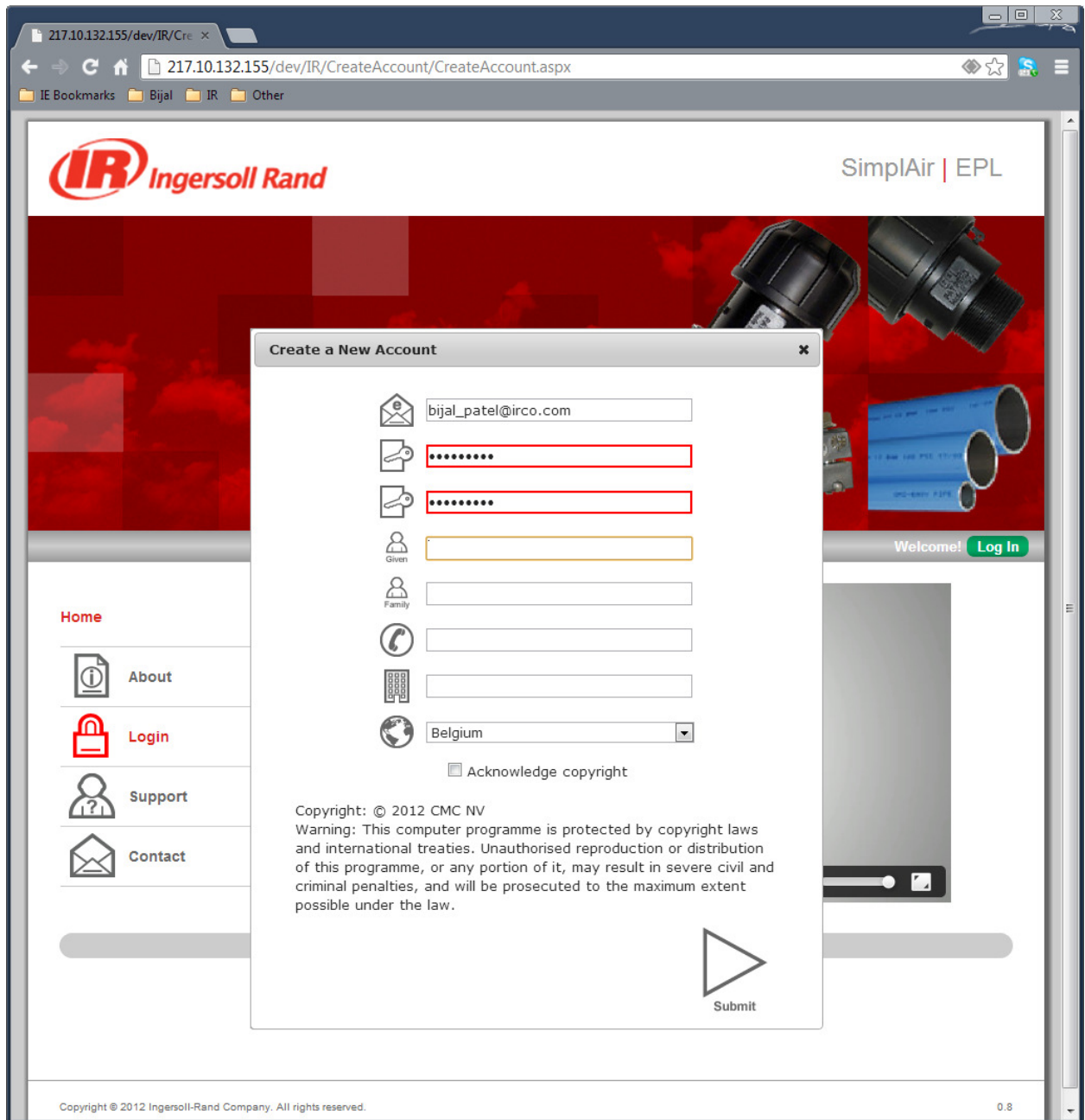
- Email:
- Password: (bordered in red)
- Confirm Password: (bordered in red)
- Given Name:
- Family Name:
- Phone Number:
- Address:
- Country:
- Acknowledge copyright
- Copyright: © 2012 CMC NV
- Warning: This computer programme is protected by copyright laws and international treaties. Unauthorised reproduction or distribution of this programme, or any portion of it, may result in severe civil and criminal penalties, and will be prosecuted to the maximum extent possible under the law.
- Submit button

The background of the modal window shows a navigation menu with links: Home, About, Login, Support, and Contact. A 'Welcome! Log In' button is also visible on the right side of the page.

- 4) When going from one tab to another, make sure you save. If not, the changes may get lost.

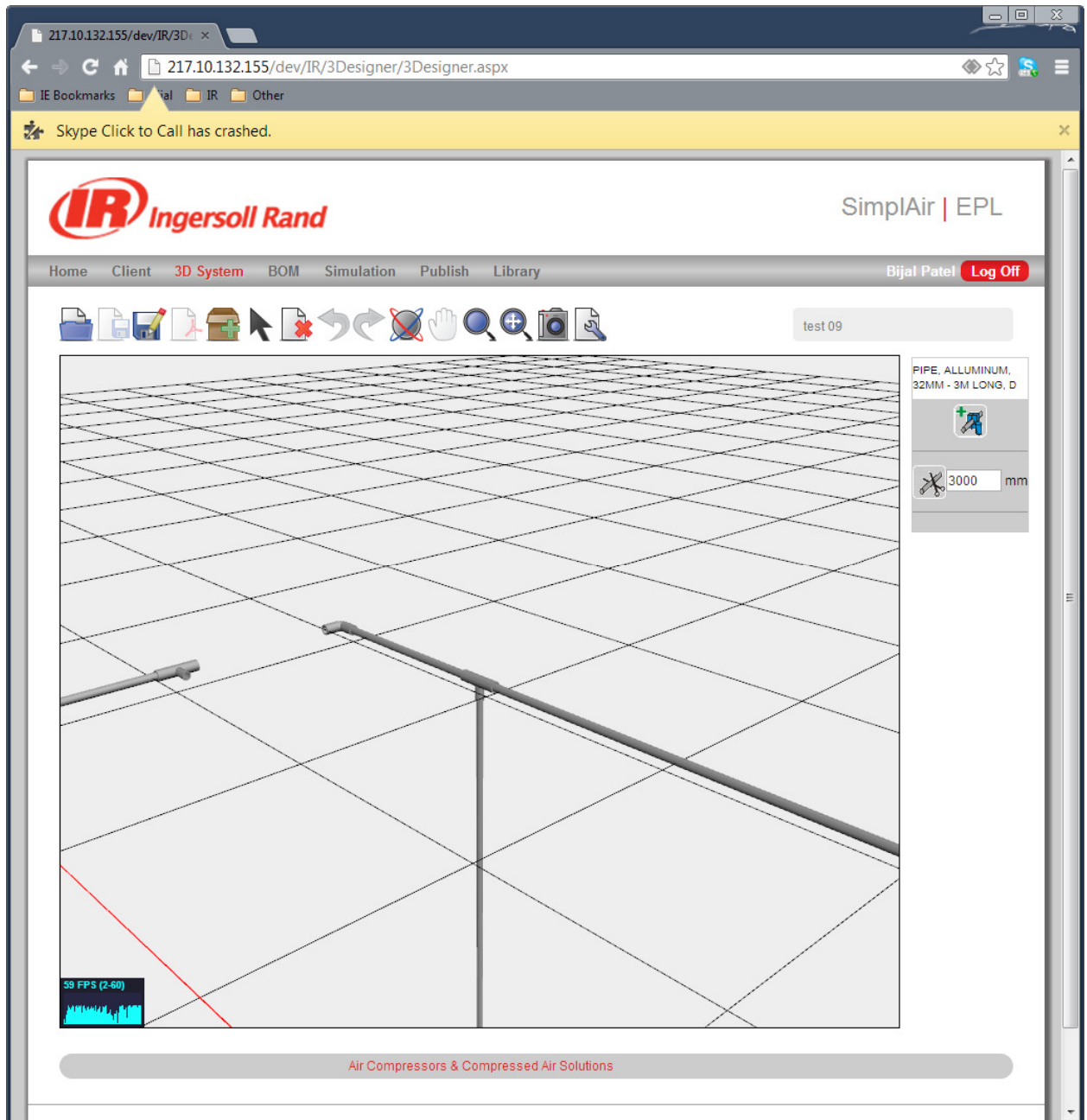
EPL Helpful Hints

- 5) When creating a project, be sure to use the appropriate country.



- 6) For copying the screen shot of the 3D design, get the view window at the zoom that you need and then press “p” on the keyboard. This will open a new page with the screenshot. Then right click on the mouse and save. The saved file can be brought into Publish.
- 7) For Zoom In or Zoom Out, the wheel on the mouse can be used or the zoom icon.
- 8) Some of the icons that are shown below the tabs and above the 3D image window are not functional yet, they are under development.

EPL Helpful Hints



- 9) For the Simulation tab, there may be possible calculation errors in the formulas. Please provide feedback if you find any issues.
- 10) For the Simulation tab, presently the only pipe material that can be used is black steel.

EPL Helpful Hints

217.10.132.155/dev/IR/Sim x

217.10.132.155/dev/IR/Simulation/Simulation.aspx

IE Bookmarks Bijal IR Other

IR Ingersoll Rand SimplAir | EPL

Home Client 3D System BOM **Simulation** Publish Library Bijal Patel **Log Off**

test 09

Installed Power	<input type="text" value=""/>	kW
Operating Hours Per Year	<input type="text" value="4000"/>	hrs
Energy Cost	<input type="text" value=""/>	\$/kWh
% Load	<input type="text" value="90"/>	%
Compressor Discharge Pressure	<input type="text" value="100"/>	psi
Compressor Discharge Flow Is Calculated	<input checked="" type="checkbox"/>	
Compressor Discharge Flow	<input type="text" value="0"/>	m ³ /min
Compressor Discharge Temperature	<input type="text" value="176"/>	°F
Air Treatment	<input type="checkbox"/>	
Air Treatment Dew Point	<input type="text" value="0"/>	°F
Minimum Ambient Temperature	<input type="text" value="14"/>	°F
Maximum Ambient Temperature	<input type="text" value="77"/>	°F
Ambient Pressure	<input type="text" value="14.7"/>	psi
Maximum Relative Humidity	<input type="text" value="80"/>	%
System Pressure Loss Tolerance	<input type="text" value="5"/>	%
Traditional Pipe Material	<input type="text" value="Black Steel"/>	
Traditional Pipe Product and Labor Cost	<input type="text" value="0"/>	\$

Calculations

System Pressure Loss	---	psi
Total Component Cost	19	\$
Total Labor Cost	---	\$
Free Air Delivery	---	m ³ /min
Annual Power Lost due to System Pressure Loss	---	kWh
Annual Cost of System Pressure Loss	---	\$
System Volume Loss	---	m ³ /min

Air Compressors & Compressed Air Solutions

Copyright © 2012 Ingersoll-Rand Company. All rights reserved. 0.8

11) If there are any technical issues, potential bug, or questions, please email to administrator using the Contact form in the Landing page:

EPL Helpful Hints

The screenshot shows a web browser window with the URL `simplairepl.com/IR/Login/Login.aspx`. The browser's address bar includes a search icon, back, forward, and refresh buttons. Below the address bar, there are several bookmark folders: "IE Bookmarks", "Local", "IR", "Other", and "Time Warner Bandw...". A notification bar asks, "Do you want Google Chrome to save your password?" with "Save password" and "Never for this site" options.

The website header features the **IR Ingersoll Rand** logo on the left and "SimplAir | EPL" on the right. Below the header is a large red banner with a grid pattern and images of industrial components like valves and pipes. A "Welcome! [Log In](#)" button is located in the bottom right corner of the banner.

On the left side, there is a "Home" section with a vertical menu of icons and text links: "About", "Login", "Support", and "Contact".

The main content area contains a video player with the Ingersoll Rand logo and the text "Ingersoll Rand" below it. The video player has a play button, a progress bar, and a timestamp of "1:18".

At the bottom of the page, there is a grey bar with the text "Air Compressors & Compressed Air Solutions".